

Here is a simple step by step guide for playing your LAN supported PS2 games using PCSX2:-

1. Although this guide should work for dummies as well but I assume you are already familiar with basic aspects of PCSX2 and its online play. If not I will recommend you to read PCSX2 config guide [here](#) and PCSX2 online play guide [here](#).

2. First and foremost I will recommend you to get GT4. Not only it's one of the best PS2 game ever, it also got best Network Config utility. If you don't have this game I will assume you are going to use Network Access Disk to change your Network Settings.

3. I hope you have already installed last released version of PCSX2 (or latest GIT build). If not head over to [this page](#) . If you are using PCSX2 for the first time I will recommend you to install the last released version which automatically updates your Runtime library files and DirectX version so you don't face errors reporting missing files and all. Also download latest version of Dev9 plugin [from here](#) and put it in plugins folder. If you are already familiar with PCSX2 you can download the latest GIT Build.

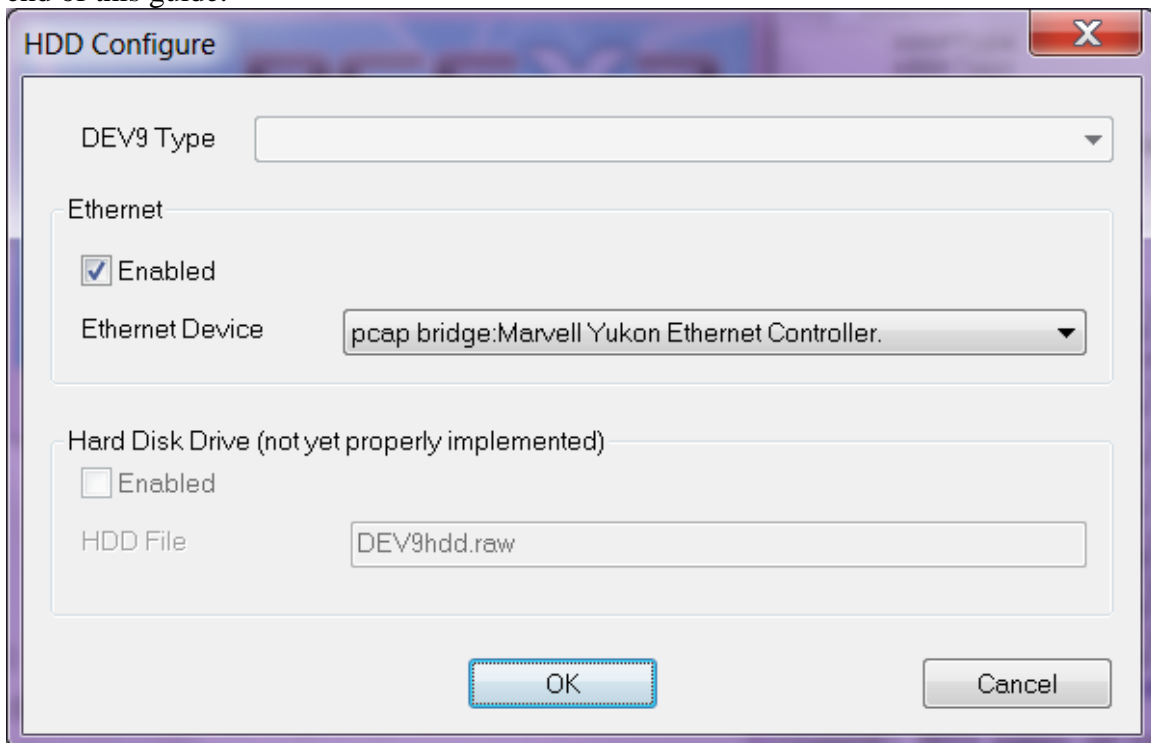
4. You will need to download and install latest version of [Winpcap](#).

5. Now configure PCSX2. I am assuming you have already dumped your BIOS and configured all other remaining plugins apart from DEV9.

From here on I am dividing the guide into two parts. The conventional way and the latest way. The conventional way is limited to LAN gaming between you and your local connections but the latest way not only works with local connections but through this you can play with anyone over the internet (which is much more fun).

Conventional way:-

Under Dev9 settings select GiGaHeRz's Dev9 driver and click on configure. Enable Ethernet and Select PCAP bridge mode of your Ethernet controller. Your wireless connection will not be listed here. To use your wireless connection read the note at the end of this guide.



6. Run GT4 or Network access disk. Get to the network settings, give a name and select these settings:

Authentication: No

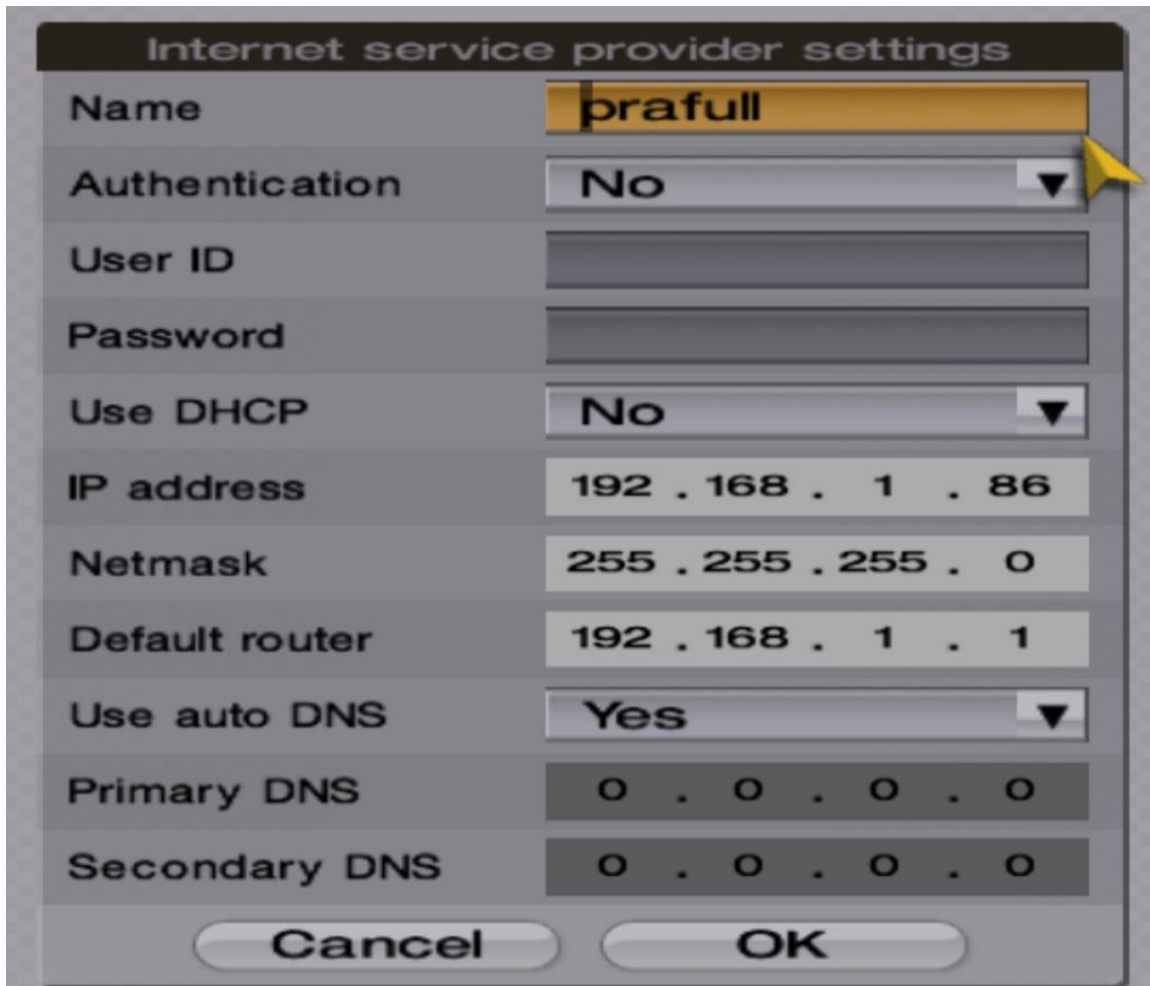
Use DHCP: No

IP Address: For most of the modems or routers set it to 192.168.1.X where X can be any value between 2 and 255. (For some other modems the setting may have to be 192.168.0.X)

Netmask: 255.255.255.0

Default Router: 192.168.1.1 (192.168.0.1 for other modem/routers)

Use Auto DNS: Yes



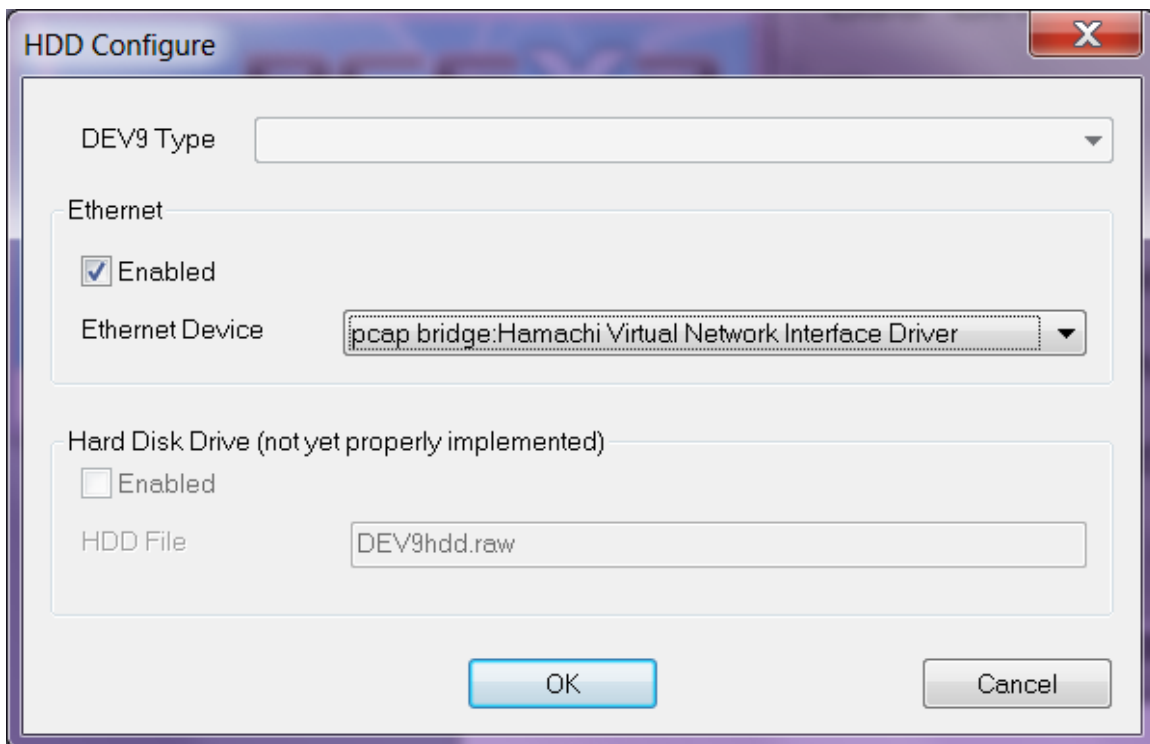
Now press OK and settings will be automatically saved.

7. If you have done everything correctly you are good to go. These settings should work with all LAN Games. You will only have to make game related settings/configurations now.

Latest Way:-

6. Download and install [Hamachi](#) . You can also use other VPN softwares but since I have personally tried and tested Hamachi I am using it in this guide.

Under Dev9 settings select GiGaHeRz's Dev9 driver and click on configure. Enable Ethernet and Select PCAP bridge mode of your Hamachi Virtual Network controller.



Run GT4 or Network access disk. Get to the network settings, give a name and select these settings:

Authentication: No

Use DHCP: No

IP Address: This will be same as your hamachi ip address.

Netmask: 255.0.0.0

Default Router: 25.0.0.1

Use Auto DNS: Yes

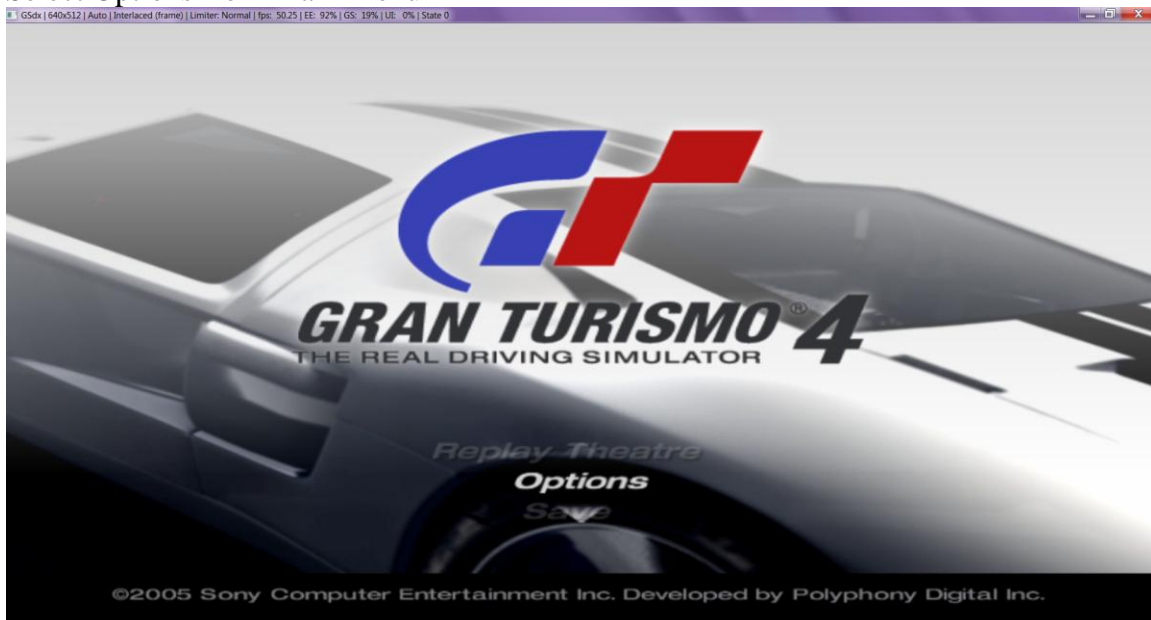
Internet service provider settings	
Name	eeee
Authentication	No
User ID	
Password	
Use DHCP	No
IP address	your hamachi ip address here
Netmask	255 . 0 . 0 . 0
Default router	25 . 0 . 0 . 1
Use auto DNS	Yes
Primary DNS	0 . 0 . 0 . 0
Secondary DNS	0 . 0 . 0 . 0
<input type="button" value="Cancel"/> <input type="button" value="OK"/>	

Press OK and settings will be automatically saved.

Now join a network through hamachi having other players to play the game.

7. If you have done everything correctly you are good to go. These settings should work with all LAN Games. You will only have to make game related settings/configurations now.

Since we have used GT4 example here I will explain the settings using GT4 here:-
Select Options from Main Menu



Select Lan Play



One of the players need to be host and use these settings



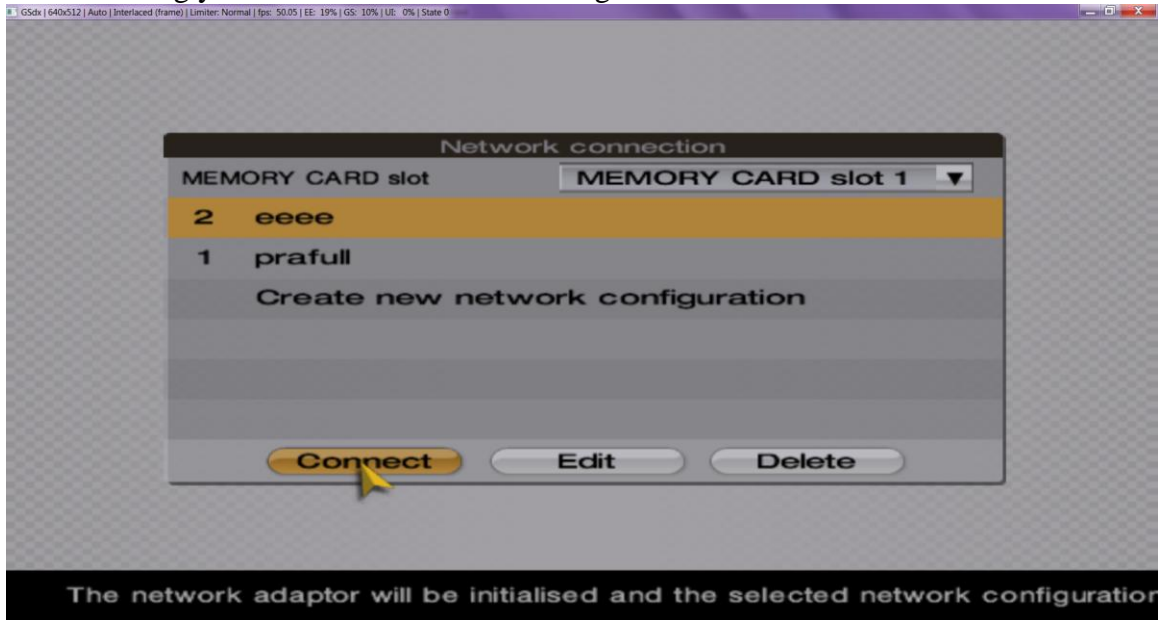
Other player needs to join the host and thus select these settings



Now go to the Arcade mode from Main menu and select Multi LAN race



Connect using your network connection settings



It should show this screen for a second or two and then connect

