

Before u begin: First of all the preferred method

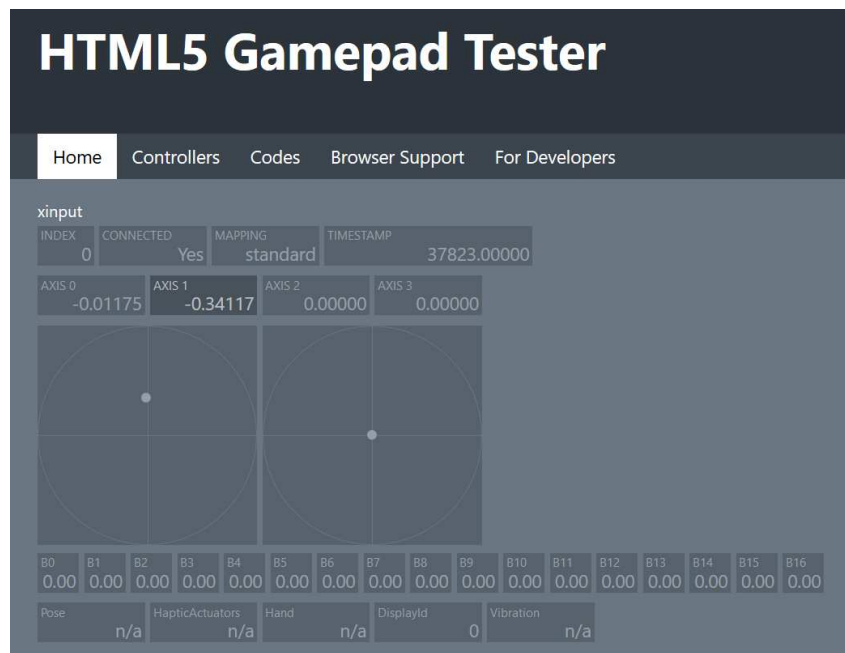
A steam guide to using your DS4 and other controllers

A basic guide to setting up your controller

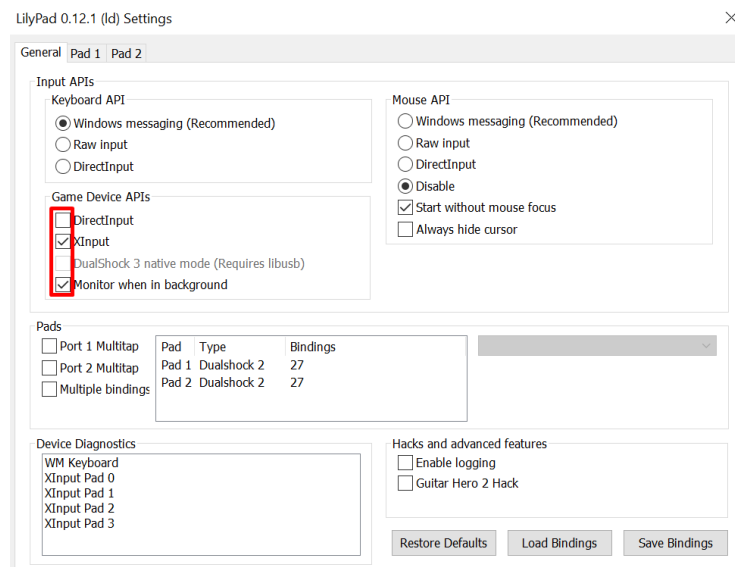
<https://forums.pcsx2.net/Thread-A-steam-guide-to-using-your-DS4-and-other-controllers>

Test if the gamepad works

<https://html5gamepad.com/>



Disable DirectInput in LilyPad (Controllers plugin in PCSX2)



DS4Windows an alternative to steam (only for PS4 controllers)

However although the steam method works perfectly there is another method.
DS4Windows (ryochan7 version)

Table of Contents

Step 1 Prepare for Bluetooth gaming 3

Step 2 Download updated DS4 Windows from Ryochan7 4

Step 3 Change the profile to your liking + essential settings..... 4

Step 4 Preventing issues 5

Step 1 Prepare for Bluetooth gaming

The PS4 controller (DualShock 4) has 2 bluetooth modes:

Sync (default mode)

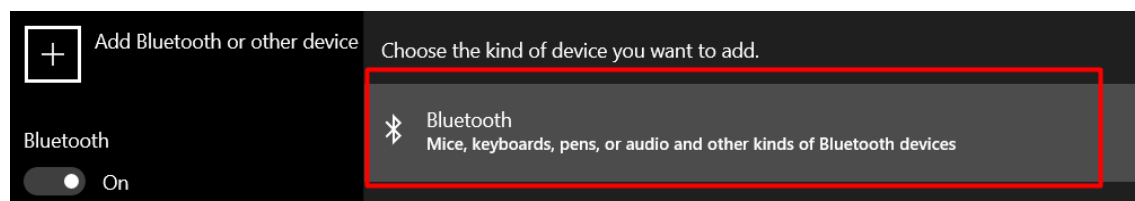
Quick pair (used for adding new Bluetooth device, first time only)

Quick pair (first time on W10):

Hold share for 2sec and then also press on the PS button to make it flicker and go into pairing mode



Next times just use sync mode (press ps button once)







Click on the controller if it pops up

Your controller should be giving a solid white color.

Step 2 Download updated DS4 Windows from Ryochan7

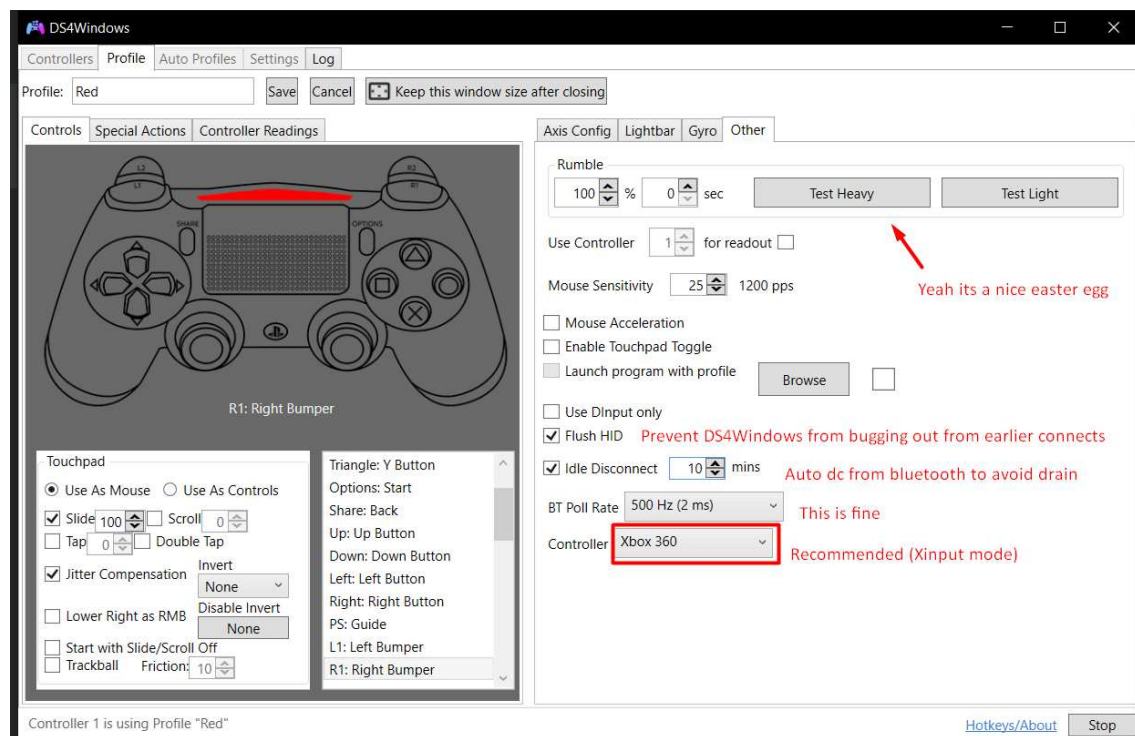
<https://ryochan7.github.io/ds4windows-site/>

 DS4Windows_2.0.13_x64.7z	1.98 MB
 DS4Windows_2.0.13_x64.zip	3.67 MB
 DS4Windows_2.0.13_x86.7z	1.98 MB
 DS4Windows_2.0.13_x86.zip	3.67 MB

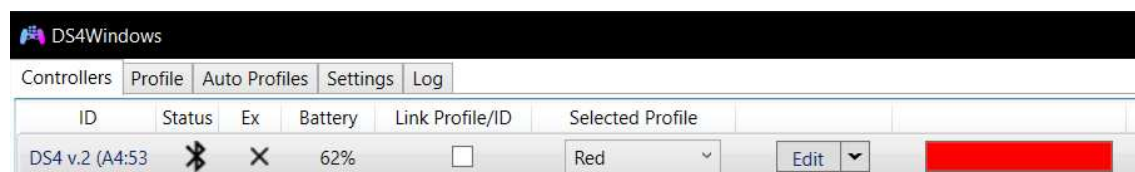
Recommended pick 1 but all work

Put in a location you will remember like documents (or somewhere else)

Step 3 Change the profile to your liking + essential settings



Current status:



Loads of option and gets a lot of updates. Also no need to rebind/keymap on version 1.5 or higher.

Step 4 Preventing issues

Don't forget to use html5gamepad tester which sometimes fixes issues too.

Either let DS4Windows run at startup or

1. Activate Bluetooth mode
2. Wait 5 seconds
3. Press PS button
4. Wait 5 seconds
5. Start DS4Windows (preferably with different color so u know for sure)

Notes: Steam used to bug out from their controller software and ds4windows but it doesn't anymore even though there is still warning from some games.

